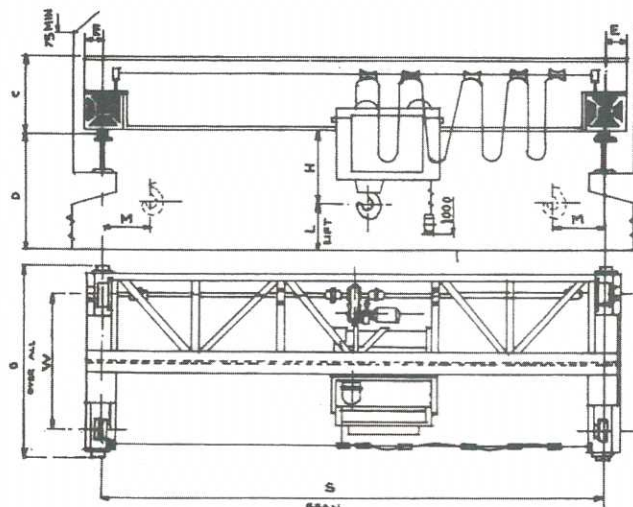




**AMBAT
ICONCRANES Pvt. Ltd.**

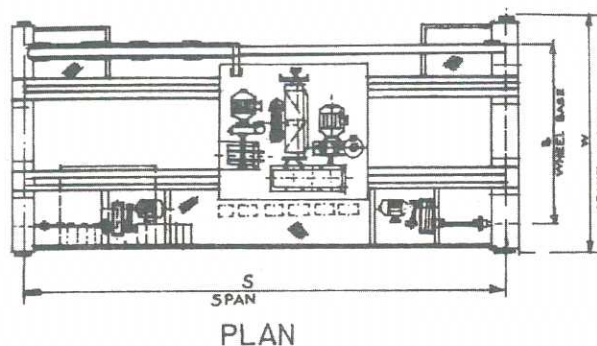
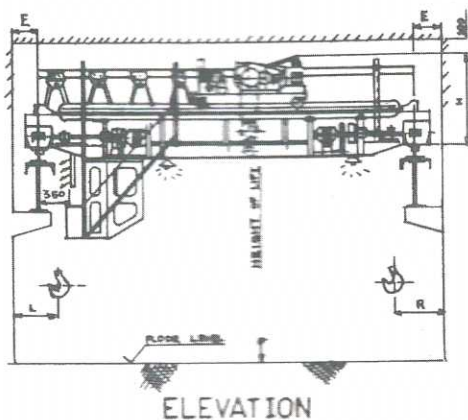


SINGLE GIRDER EOT CRANES

CAPACITY TONNES	SPAN MTRS S	LIFT MTRS L	HOIST TYPE	HOISTING SPEED Mtrs. Min.	WHEEL BASE MM W	HOOK APPROACH MM M	HEAD ROOM MM C	END CLEARANCE MM E	TOP RAIL TO HOOK MM H	CRANE WIDTH MM O	L.T WHEEL LOAD KG. (APROX)	CRANE WEIGHT KG. (APROX)
1	6	10	SM-221-X-2	10	1800	800	500	160	450	2400	940	1690
	9	10			2000	800	500	160	450	2600	1040	2140
	12	10			2400	800	600	160	600	3000	1250	2990
	15	10			3000	800	850	160	750	3600	1350	3390
	18	10			3600	800	850	160	750	4200	1450	3790
2	6	5	SM-221-X-4	5	1800	800	600	160	450	2400	1530	1990
	9	5			2000	800	600	160	450	2600	1630	2390
	12	5			2400	800	800	160	600	3000	1855	3290
	15	5			3000	800	950	160	750	3600	2115	4340
	18	5			3600	800	950	160	750	4200	2280	4990
3	6	10	SM-223-N-2	7	2000	950	700	175	700	2600	2200	2490
	9	10			3000	950	700	175	700	2600	2525	3090
	12	10			2400	950	850	175	750	3000	2600	4090
	15	10			3000	950	1000	175	900	3600	2750	4690
	18	10			3600	950	1000	175	900	4200	3075	5990
5	6	7	SM-223-X-4	5	1500	1000	700	225	1500	2000	3090	2590
	9	7			2200	1000	800	225	1500	2800	3200	3190
	12	7			2400	1000	950	225	1500	3000	3450	4190
	15	7			3000	1000	1100	225	1500	3600	3750	5390
	18	7			3600	1000	1100	225	1500	4200	4115	6840
7.5	6	8.5	SM-225-N-3	3.5	1800	1050	800	225	1800	2400	4790	3790
	9	8.5			2200	1050	1000	225	1800	2800	5020	4690
	12	8.5			2400	1050	1000	225	1800	3000	5290	5790
	15	8.5			3000	1050	1200	225	1800	3600	5580	6890
	18	8.5			3600	1050	1200	225	1800	4200	5890	8190
10	6	10	SM-225-X-4	2.5	1800	1150	800	250	750	2400	5880	4190
	9	10			2200	1150	1000	250	750	2800	6180	5390
	12	10			2400	1150	1100	250	900	3000	6440	6390
	15	10			3000	1150	1250	250	950	3600	6780	7790
	18	10			3600	1150	1250	250	1000	4200	7255	9690

NOTE :

- 1) Technical parameters listed as above are as per our design standards. Exact specifications to suit customers requirement can be provided as per order.
- 2) Above specifications are for class II Duty Crane as per ISS IS-807 1963 & ISS IS 3177-1977 (Revised) and 800.
- 3) Dimension for monogirder cranes above 10 Ton S.W.L. & 18 M-Span an be supplied on request.
- 4) Due to continuous design improvement, dimensions are subject to change without notice.
- 5) We can supply central drive as per requirement.
- 6) We can supply Class IV duty cranes.



DOUBLE GIRDER EOT CRANES

CAPACITY TONNES	SPAN MTRS S	HEAD ROOM MM H	HOOK APPROACH MM		END CLEARANCE MM E	CRANE WIDTH MM W	WHEEL BASE MM B	L.T. WHEEL LOAD TONNES (APPROX)	CRANE WT. TONNES E
			L	R					
3	10.5	1600	900	750	250	5100	4200	4.40	10.10
	13.5	1600	900	750	250	5100	4200	4.70	11.40
	16.5	1600	950	750	250	5100	4200	5.20	13.40
	19.5	1600	1000	750	250	5100	4200	5.50	14.70
	22.5	1600	1200	750	250	5100	4200	6.30	17.90
	25.5	1700	1300	750	250	5800	5100	6.80	19.90
5	10.5	1650	950	850	250	5100	4200	5.30	10.50
	13.5	1650	950	850	250	5100	4200	5.70	11.80
	16.5	1750	950	850	250	5100	4200	6.10	13.70
	19.5	1750	1000	850	250	5100	4200	6.50	15.10
	22.5	1750	1200	850	250	5100	4200	7.40	18.80
	25.5	1800	1300	850	250	5800	5100	7.90	20.50
7.5	10.5	1700	1000	900	250	5800	4800	6.80	11.40
	13.5	1700	1000	900	250	5800	4800	7.10	12.70
	16.5	1800	1000	900	250	5800	4800	7.70	15.00
	19.5	1800	1000	900	250	5800	4800	8.50	18.30
	22.5	1800	1200	900	250	5800	4800	8.80	19.20
	25.5	18.50	1300	900	250	6100	5100	9.70	23.10
10	10.5	1800	1100	900	250	5800	4800	8.50	13.10
	13.5	1800	1100	900	250	5800	4800	9.00	14.70
	16.5	1900	1100	900	250	5800	4800	9.70	17.60
	19.5	2000	1100	900	250	5800	4800	10.30	19.90
	22.5	2000	1200	900	250	5800	4800	11.00	22.70
	25.5	2000	1300	900	250	6100	5100	12.00	26.90
15	10.5	2000	1150	950	250	5800	4800	12.00	16.40
	13.5	2000	1150	950	250	5800	4800	12.60	18.30
	16.5	2100	1150	950	250	5800	4800	13.30	21.20
	19.5	2100	1150	950	250	5800	4800	14.00	23.90
	22.5	2200	1250	950	300	5800	4800	14.80	27.30
	25.5	2200	1350	950	300	6100	5100	15.70	31.20
20	10.5	2200	1250	1000	300	5800	4800	14.70	17.70
	13.5	2200	1250	1000	300	5800	4800	15.20	19.90
	16.5	2400	1250	1000	300	5800	4800	15.90	22.70
	19.5	2400	1250	1000	300	5800	4800	16.80	26.20
	22.5	2500	1250	1000	300	5800	4800	17.70	29.90
	25.5	2500	1350	1000	300	6300	5300	19.20	35.90
25	10.5	2400	1300	1050	300	6100	5200	18.20	19.80
	13.5	2600	1300	1050	300	6100	5200	18.70	21.80
	16.5	2700	1300	1050	300	6100	5200	19.90	26.60
	19.5	2700	1300	1050	300	6100	5200	20.60	29.30
	22.5	2700	1300	1050	300	6100	5200	21.70	33.90
	25.5	2750	1400	1050	300	6300	5300	22.70	37.90

NOTE :

- 1) Above specifications are for Class II Duty Cranes as per IS-807 & ISS IS 3177 - 1977 (Revised) & 800.
- 2) Dimensions detailed above are based on standard 10 metres height of lift.
- 3) Specification for cranes above 25 ton capacity can be provided on request.
- 4) The above specification are our standard. Exact specifications to suit customer requirement can be provided against specific enquiry.
- 5) Due to continuous design improvements dimensions are subject to change without notice.
- 6) We can supply central drive as per requirement.
- 7) We can supply Class IV duty cranes.



AMBAT ICONCRANES Pvt. Ltd.



AMBAT ICON cranes are designed and manufactured in accordance with IS-807 / 1963 and IS - 3177 / 1977 (revised). AMBAT cranes are ideal for wide ranging applications in industries and are most reliable, robust and yet economical.

SPECIAL FEATURES

Low dead weight and headroom economises structural cost of factory girders and industrial sheds.
Standardisation of various mechanical assemblies ensures minimum inventory and low breakdown costs.
Minimum approaches due to compact and modern design standards ensure utilisation of maximum working area.
Wide ranging selection of lifts and speeds to suit different application requirements.
Standardised components ensure speedy deliveries at economical price.

CONSTRUCTIONAL FEATURES

DISTING AND CROSS TRAVEL MACHINERY :

AMBAT Electric hoist with a trolley forms the hoisting machinery for single girder cranes, whereas open winch crab on a birail trolley is employed for double girder cranes.

AMBAT monorail hoist has a specially designed conical rotor motor with built-in mechanical disc brake, totally enclosed oil lubricated gear box and rope drum supported on roller bearings, housed inside the main housing. Rope guide and rope tightener ensure correct laying of rope and the required tension. Built-in limit switches control both the movements of hook at extreme positions.

AMBAT open-winch crab consists of a rope drum, accurately machined to the required pitch, oil lubricated gear box and a motor brake, all housed on a birail trolley, driven through crane duty motor. The selection of motor, gear box, brake and rope drum are done based on the calculations at the design stage, incorporating the requisite factor of safety for overhead equipment.

MAIN GIRDER AND END CARRIAGES : The main girder for the cranes shall be either beam type or box type construction depending on capacity, span and application requirements. Beam type construction is generally braced with auxiliary girder to prevent any lateral buckling of the structure. Main girders in the form of box structures are manufactured from IS-206 tested plates, adequately stiffened with diaphragms to take care of bending and torsional loadings with diaphragms to take care of bending and torsional loadings with adequate factor of safety.

LONG TRAVEL MACHINERY : Crane is driven either by a centrally located crane duty induction motor coupled to LT wheels through a totally enclosed oil lubricated helical gear reducers or by a twin drive arrangements, driving a set of geared wheels at two ends. Electro-hydraulic thrustor brake is employed as a braking mechanism to ensure smooth and vibration free starts and stops.

END CARRIAGES : are fabricated from rolled channel sections / plates adequately stiffened with diaphragms and bearing plates to receive the main girders. The end carriage is provided with suitable buffers, scraper plate and jacking pads for easy removal of LT wheels during maintenance.

GEARS : are manufactured from alloy steel as per IS-4460 housed in totally enclosed oil lubricated housing. Shaftings are supported in antifriction bearings for long life and minimum wear and tear.

PLATFORM : A short walkway platform for single girder cranes or a platform through out the span of the crane on the drive side shall be provided for double girder cranes for carrying out maintenance.

BEARINGS : All bearings provided / housed in various assemblies shall be only antifriction type like ball/roller/needle.

CRANE CONTROLS : The crane shall either be floor operated through pendant push button or cabin operated through master controllers.

All switch gears such as contactors, fuses, overload relays, control transformer and auxiliary equipment are housed in a dust proof steel cabinet. The control voltage provided shall generally be 110 Volts, 50 Hz, AC.

POWER FEEDING ARRANGEMENT : Power supply to hoisting equipment can either be through festoon cable over stretched wire system or cable trolleys mounted on 'T' track or beam section

DSL SYSTEM : Power supply to the crane shall be either through 4 wire bare copper conductor system, flexible trailing cable system or 4 angle iron conductor system depending on the site location and application requirements.

PAINTING : All cranes shall be painted as per material handling code

LIST OF OTHER AMBAT PRODUCTS :

ELECTRIC HOISTS * GANTRY CRANES * JIB CRANES

* CRABS * ELECTRIC WINCHES * PUSH PULL, HAND GEARED AND ELECTRIC TROLLEYS

* POWER SUPPLY SYSTEMS FOR HOISTS AND CRANES * BRAKE MOTORS AND GEARED BRAKE MOTORS

* SPARE PARTS FOR HOISTS AND CRANES

AMBAT ICONCRANES PVT. LTD.

A-112, Aamargain Indl. Complex, Opp. S.T. Workshop, Khopat, THANE (W) - 400 601.

Tel : 91-22-25898425/25896397 Telefax : 91-22-25896397 25470922

Email : ambat.nair@ambaticranes.com / ambat.nair@gmail.com Website : www.ambaticranes.com

25475362

